



# PROSPECTOR

Metals Corp.

TSXV: PPP ▪ OTCQX: ETHOF ▪ FRANKFURT: 1ET

**Prospector Metals Corp.**



April 2022

---

# FORWARD LOOKING STATEMENTS

This presentation is current as of April 2022. The information contained in this presentation is provided by Prospector Metals Corp. ("Prospector" or the "Company") for informational purposes only. It does not constitute investment advice, or an offer to issue or arrange to issue, or the solicitation of an offer to issue, securities of the Company. All references to Prospector are meant to apply equally to the parent company and its subsidiaries.

This presentation contains certain "forward-looking statements" within the meaning of Canadian securities legislation, including statements regarding the Company's exploration plans for and resource potential of the Company's projects. Although the Company believes that such statements are reasonable, it can give no assurance that such expectations will prove to be correct. Forward-looking statements are statements that are not historical facts; they are generally, but not always, identified by the words "expects," "plans," "anticipates," "believes," "intends," "estimates," "projects," "aims," "potential," "goal," "objective," "prospective," and similar expressions, or that events or conditions "will," "would," "may," "can," "could" or "should" occur, or are those statements, which, by their nature, refer to future events. The Company cautions that forward-looking statements are based on the beliefs, estimates and opinions of the Company's management on the date the statements are made, and they involve a number of risks and uncertainties. Consequently, there can be no assurances that such statements will prove to be accurate and actual results and future events could differ materially from those anticipated in such statements. Except to the extent required by applicable securities laws and the policies of the TSX Venture Exchange, the Company undertakes no obligation to update these forward-looking statements if management's beliefs, estimates or opinions, or other factors, should the TSX Venture Exchange, the Company undertakes no obligation to update these forward-looking statements if management's beliefs, estimates or opinions, or other factors, should change. Factors that could cause future results to differ materially from those anticipated in these forward-looking statements include, accidents and other risks associated with mineral exploration operations, the risk that the Company will encounter unanticipated geological factors, or the possibility that the Company may not be able to secure permitting and other governmental clearances, necessary to carry out the Company's exploration plans, and the risk of political uncertainties and regulatory or legal changes in certain of the jurisdictions where the Company carries on its business that might interfere with the Company's business and prospects.

The reader is cautioned not to place undue reliance on forward-looking statements, and is urged to refer to the Company's reports, publicly available through the Canadian Securities Administrators' System for Electronic Document Analysis and Retrieval (SEDAR) at [www.sedar.com](http://www.sedar.com) for a more complete discussion of the Company's business and the risks associated with that business.

This presentation does not constitute an offer of shares for sale in the United States or to any person that is, or is acting for the account or benefit of, any U.S. person [as defined in Regulation S under the United States Securities Act of 1933, as amended (the "Securities Act") ("U.S. Person")], or in any other jurisdiction in which such an offer would be illegal. This presentation may only be disseminated or transmitted into any jurisdiction in compliance with, and subject to, applicable securities laws. Readers are required to ensure their compliance with applicable security laws.



# INVESTMENT HIGHLIGHTS

- Dedicated corporate and technical team with a **PROVEN TRACK RECORD OF DISCOVERY** and wealth creation
- Business model focused on **COST-EFFECTIVELY** exploring **DISTRICT-SCALE**, early-stage gold and base metal projects
- Currently have **THREE DRILL-READY PROJECTS** plus a **FULL PIPELINE** of recently staked claim blocks
- Core objective is to create **TRANSFORMATIONAL SHAREHOLDER VALUE** through discovery of new mineral districts
- **PROACTIVE RELATIONSHIP BUILDING** with First Nation and local communities
- ***“DISCOVERY DRIVEN”***



# DISCOVERY GROUP – RAISED OVER \$750M SINCE 2002



## Significant Past Transactions:

**GREAT BEAR RESOURCES** Acquired for **\$1.8B** by Kinross in 2022

**NORTHERN EMPIRE RESOURCES CORP.** Acquired for **\$117M** by Coeur Mining in 2018

**KAMINAK GOLD CORPORATION** Acquired for **\$520M** by Goldcorp in 2016





# MANAGEMENT & DIRECTORS



## **Alex Heath, CFA**

President & CEO

CFA charter holder with over 15 years of investment banking and capital markets experience.



## **Craig Roberts, P.Eng.**

Co-Chairman

Mining engineer with over 30 years of operations, consulting and investment banking experience.



## **Robert Scott, CPA, CA, CFA**

CFO

Over 20 years experience in accounting, corporate finance, banking and management of Canadian publicly traded companies. Mr Scott is also CFO for Great Bear Resources.



## **Jo Price P.Geo., MBA**

VP Exploration

Exploration geologist and project manager with 20+ years experience.



## **Dr. Rob Carpenter Ph.D., P.Geo.**

Co-Chairman

Over 30 years of corporate and technical mineral exploration experience. Co-founder and President and CEO of Kaminak Gold.



## **Henk Van Alphen**

Director

Over 36 years in the mining business: drilling contractor and president, CEO and Director.



## **Michael Murphy**

Director

Co-founder and director of Torex Gold Resources Inc., President and CEO of Global Battery Metals Ltd



## **Michelle Tanguay**

VP Community & Environment

Over 25 years of experience working within the resource extraction industry.



# ADVISORY TEAM



**Dr. Robert Brozdowski Ph.D., P.Geo.**

Technical Advisor

Over 30 years diverse exploration experience emphasizing magmatic Ni-Cu-PGE & gold, including uranium, VMS, SEDEX, and IOCG deposits. Obtained Ph.D. Geology from Western University, London, ON, M.A. Geology from Temple University, Philadelphia, PA), and a B.S. Geosciences from Pennsylvania State University.



**Jodie Gibson M.Sc., P.Geo.**

Technical Advisor – Newfoundland

Mr. Gibson is an exploration geologist with over 14 years mineral exploration experience throughout the North American Cordillera from Alaska to Mexico; including syngenetic and epigenetic precious and base metal systems.



**John Robins P.Geo.**

Advisor

Co-Founder and Principal of Discovery Group. Professional geologist, prospector and entrepreneur with over 35 years of experience in the mining industry.



**Dan MacNeil M.Sc., P.Geo.**

Technical Advisor

Economic Geologist specializing in Precious and Base Metals with over 20 years of experience in a wide variety of geological settings in the Americas, Scandinavia, Eastern Europe and the Near East.



**Dr. Alan Wainwright Ph.D., P.Geo., FSEG**

Technical Advisor

Economic geologist with 20+ years of mineral exploration and research experience in North America, South America, Europe and Asia, focused on base metals and gold.



**Jim Paterson B.Comm**

Advisor

Co-Founder and Principal of Discovery Group. Over 22 years of industry experience, including capital raises, acquisitions, joint-ventures, spin-outs, RTOs & IPOs, and corporate development activities.



# PROJECTS





[prospectormetalscorp.com](http://prospectormetalscorp.com)



# NEWFOUNDLAND

## Toogood Project

Orogenic gold



TSXV: PPP • OTCQX: ETHOF • FRANKFURT: 1ET

**DISCOVERY**  
GROUP

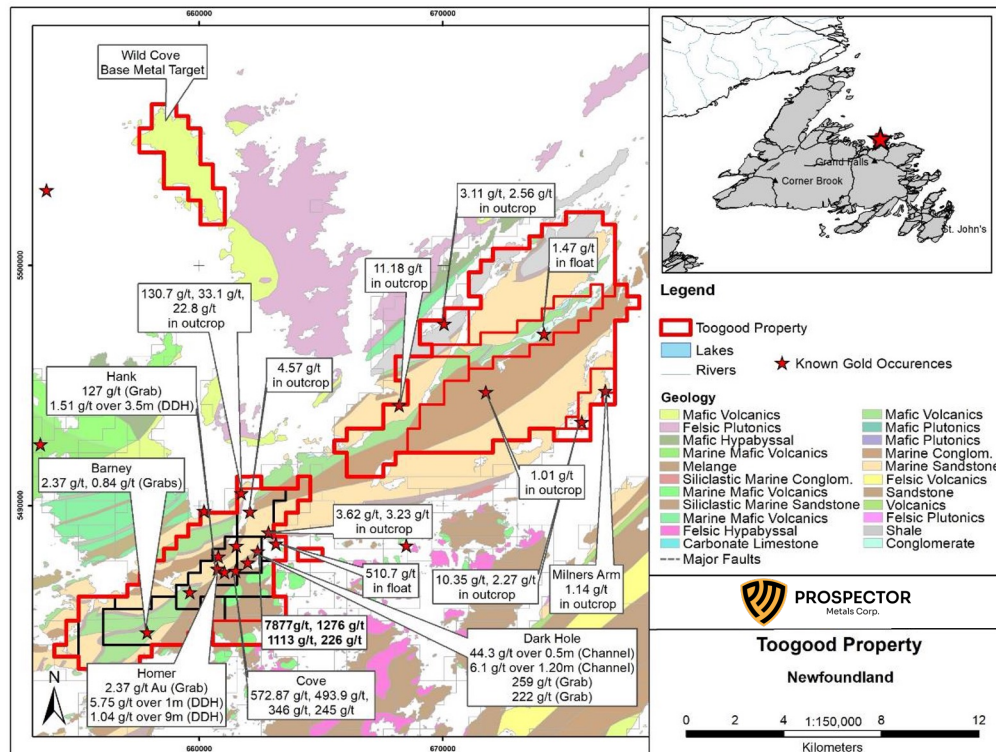




# TOOGOOD PROJECT,

## Orogenic Gold, Newfoundland

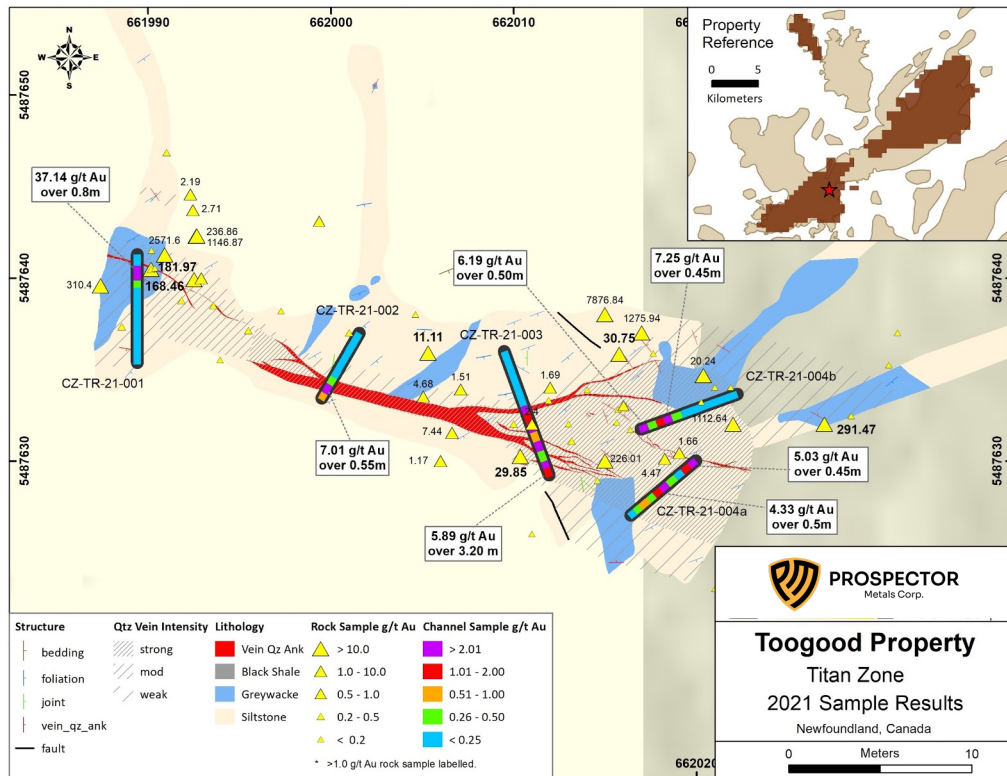
- 118 km<sup>2</sup> property in geological belt that is host to several discoveries including Marathon Gold's Valentine Lake project.
- Numerous occurrences of coarse and fine visible gold.
- Both orogenic and epithermal depositional environments.
- 28 km of prospective strike.
- High-grade Gold discovered in initial exploration program (see July 21 and Aug 9, 2021 news releases)



## TOOGOOD PROJECT, Newfoundland

- Initial prospecting and mapping, together localized structural analysis of known prospects has identified 3 high grade gold prospects assaying up to 7,877 g/t Au.
- LiDar survey completed
- Airborne Magnetic survey completed
- Local soil and biochemical surveys completed
- Stripping, trenching and chip sampling at Quinlan, Titan and the new Sherwood showing has completed and assays are pending
- Maiden drill program to begin in H1-2022





# TOOGOOD PROJECT,

## Titan Showing

- Four weathered sub-crop grab samples with visible gold located 420m ENE of the previously announced initial outcrop.
- The grab samples are angular, loose, weathered, palm sized quartz vein material in an area of thin cover. They are interpreted to be close to source, covering an area of approximately 40m x 10m. The Toogood project area lacks significant glacial till or erratic boulders due to a low-lying marine incursion approximately 12,000 years ago. As a result, soil and boulders are interpreted as in place weathered sub-crop.
- Initial mapping and prospecting suggest mineralization may be locally associated with quartz veins that occur along NNE trending faults within sedimentary host rocks. Visible gold occurs in outcrops of quartz vein stockwork within a strongly sericitic silica pyrite altered felsic (tonalite) dike that intruded a dextral strike slip structure.
- A total of 50 channel samples across five separate channels (total 27.94m) to test the continuity of mineralization within quartz-ankerite veins hosted in altered shale and greywacke. Channel samples returned assays of 37.14 g/t Au over 0.8m, 7.0 g/t Au over 0.6m, 5.89 g/t Au over 3.2m, 4.33 g/t Au over 0.5m, 5.03 g/t Au over 0.5m and 7.25 g/t Au over 0.5m.









[prospectormetalscorp.com](http://prospectormetalscorp.com)



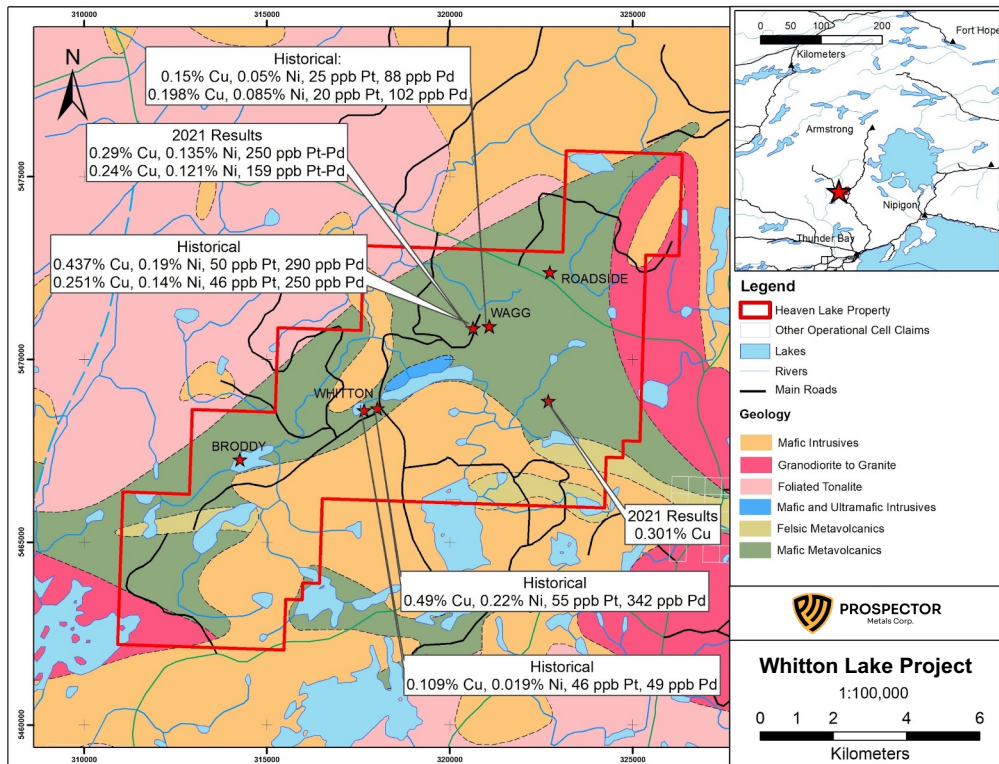
# ONTARIO

**Gold, copper, nickel,  
platinum, palladium**



TSXV: PPP • OTCQX: ETHOF • FRANKFURT: 1ET

**DISCOVERY**  
GROUP

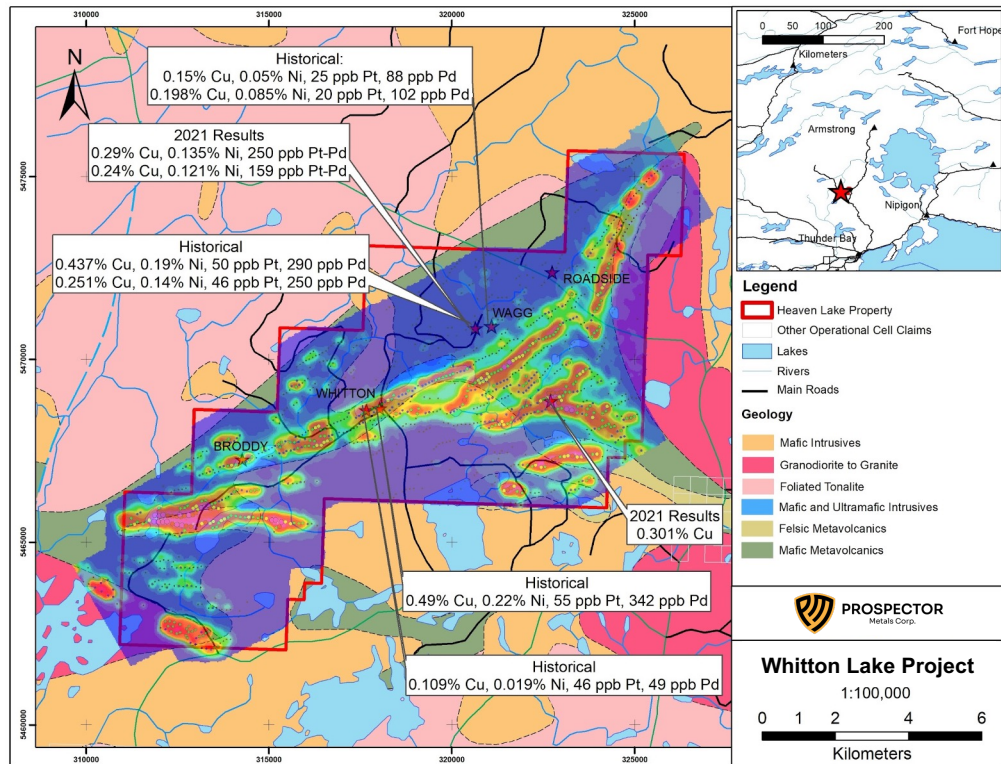


## WHITTON LAKE,

Nickel, Copper, Platinum,  
Palladium, Ontario

- Located within 20 km of Impala's operating Lac des Iles platinum-palladium-nickel-copper mine, and yet the property has seen only sporadic exploration in recent years.
- Project exhibits multiple magmatic sulphide and VMS type targets: Whitton, Roadcut, Wagg, Broddy.
- VTEM survey completed
- Confirmation sampling and mapping in 2021 by Ethos confirmed the location of sulphidic mafic-ultramafic intrusive units, locally anomalous in Cu, Ni and Pd-Pt





## WHITTON LAKE, 2021 Work

- Confirmation sampling and mapping in 2021 by Ethos confirmed the location of sulphidic mafic-ultramafic intrusive units, locally anomalous in Cu, Ni and Pd-Pt
- Modeling of the VTEM survey conducted in 2021 suggests the presence of robust, strongly conductive linear horizons. In addition, massive sulphide and sulphidic Iron formation correlates with the geophysics in a number of locations.



# WHITTON LAKE

## Nickel, Copper, Platinum, Palladium, Ontario

### WHITTON LAKE

<b>Under explored greenstone belt</b> → no previous large-scale exploration programs completed	✓
<b>Proven regional endowment</b> → NW Ontario segment of superior province hosts world class precious and base metal deposits – within 20km of Impala's Lac des Iles operating Ni-Cu-PGE mine	✓
<b>Multiple major zones along NE trend</b> → favorable trends for syn-volcanic VMS mineralization, mafic-ultramafic (MUM) intrusions with Ni-Cu-PGE sulfides	✓
<b>Robust geophysical targets identified in 2021 VTEM survey</b> → multiple ready to drill, both MUM hosted Ni-Cu-PGE sulfides and for syn-volcanic VMS deposits	✓
<b>Other MUM Ni-Cu-PGE targets</b> → a significant trend of blebby PGE enriched sulfides at the Wagg target will be followed up in Spring 2022 with an IP survey and prospecting to define specific drill targets	✓







# WHITTON LAKE,

## Exploration 2022

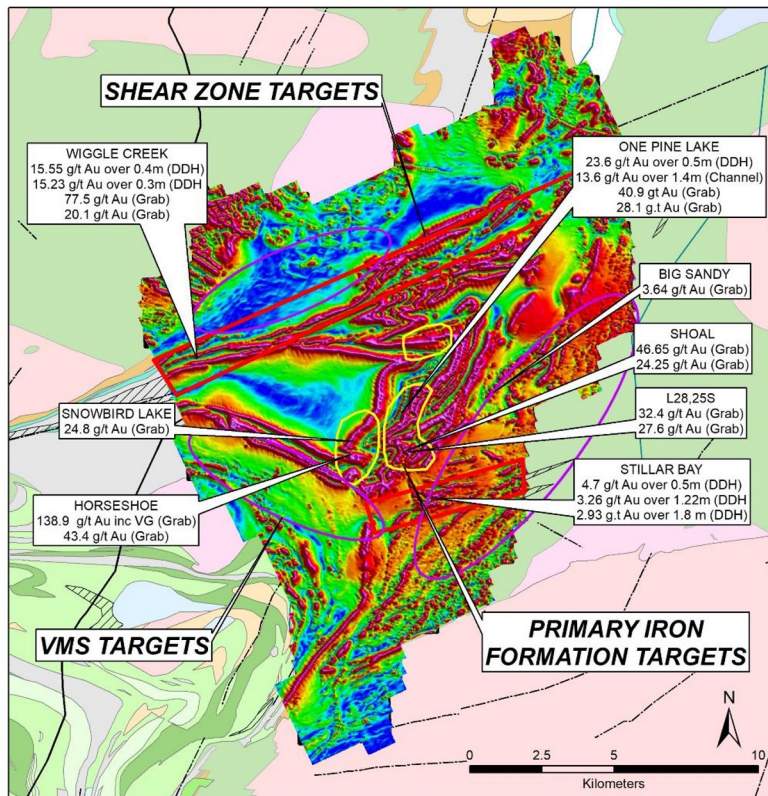
- Line Cutting, Ground TEM at the Whitton target followed by drill testing (3000m) in H1
- Line Cutting, Ground IP at Wagg target followed by drill testing (1000m).
- Additional mapping, geochemical fingerprinting, stripping and prospecting along the strike at Roadcut.
- Additional prospecting along EM anomaly at Broddy with possible diamond drilling to follow.
- Permits are pending.

# SAVANT LAKE

## Iron Formation Hosted High-grade Gold, Ontario

Showing	Lithology	Best Surface Sample Assay (g/tAu)	Best Historical Drillhole Intercept
Horseshoe	Iron Formation	138.87	Never drilled
Wiggle Creek	Iron Formation	77.50 <sup>1,2</sup>	15.55 g/t Au over 0.4m <sup>1</sup>
Shoal	Iron Formation	46.65 <sup>1,2</sup>	1.87 g/t Au over 0.6m <sup>1</sup>
One Pine	Iron Formation	40.87	23.6 g/t Au over 0.5m <sup>1</sup>
Snowbird	Iron Formation	38.8	Never drilled
L28	Iron Formation	32.35	Never drilled
Stillar Bay	Sheared Iron Formation	4.01 <sup>1,2</sup>	3.26 g/t Au over 1.22m <sup>1</sup>
Big Sandy	Sheared Volcanics	3.64	Never drilled





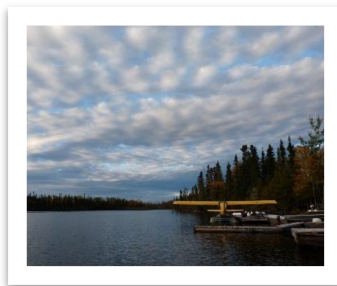
## SAVANT LAKE

### Iron Formation Hosted High-grade Gold, Ontario

- 22,900 ha property, road accessible 240 km northwest of Thunder Bay, Ontario.
- High grade gold mineralization over 10 x 10 km area.
- Multiple untested high-grade targets.
- Similar setting to Newmont's Musselwhite Mine, Agnico Eagle's Meadowbank and Amaruq mines.
- Airborne Magnetic Survey Complete.



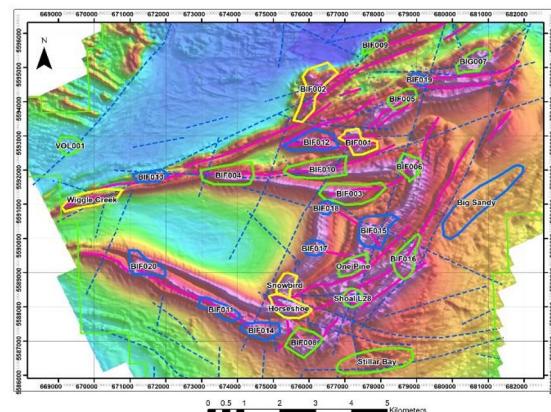
Priority	Name	Geologic Reasons for Selection	Planned Initial Follow-up	Au ppm in Rock	Best Drill Intercept	Highest Tau
1	Horseshoe	BIF, Fold nose, SZ	GeoProbe/ Prospect/ Gmag	138.9		5.35
1	Snowbird	BIF	GeoProbe/ Prospect/ Gmag	38.8	0.27m at 17 g/t	8.5
1	BIF001	BIF, Fold nose, SZ	Prospect/ Gmag	0.171		2.17
1	BIF002	BIF, Fold nose, SZ, contact w volc	Prospect/ Gmag	0.064		41.2
1	Wiggle Creek	BIF, SZ	GeoProbe/ Prospect/ Gmag	20.1	0.4m at 15g/t	4.46
2	BIF003	BIF, Fold nose, SZ	Prospect	0.005		6.77
2	BIF004	BIF, Fold nose, SZ	Prospect	0.005		5.5
2	BIF005	BIF, Fold nose, SZ	Prospect	0.005		7.92
2	BIF006	BIF, Fold nose, SZ	Prospect	0.078		5.56
2	BIG007	BIF, Fold nose, SZ	Prospect	0.088		14.37
2	VOL001	Mafic volc, F1 anticline	Prospect	-9999		1.51
2	BIF008	BIF, SZ	Prospect	0.005		2.86
2	One Pine	BIF, SZ	Prospect/ Gmag	44.8	0.46m at 21.5g/t	4.75
2	BIF009	BIF, Fold nose, SZ, contact w volc	Prospect	0.005		4.09
2	BIF010	BIF, Fold nose, SZ	Prospect	-9999		2.69
2	BIF016	BIF, Fold nose, SZ	Prospect	0.095		5.26
2	Shoal L28	BIF, Fold nose, SZ	Prospect	22.11	0.6m at 1.7g/t	2.01
2	Stellar Bay	BIF, chl-cb-fuch-py SZ, contact w volc	Prospect	3.89	1.22m at 3.26 g/t	5.51
3	BIF011	BIF, SZ	Prospect	0.005		5.63
3	BIF012	BIF, Fold nose, SZ	Prospect	-9999		0.03
3	BIF013	BIF, SZ	Prospect	0.005		5.1
3	BIF014	BIF, SZ	Prospect	-9999		5.67
3	BIF015	BIF, Fold nose, SZ	Prospect	0.142		19.89
3	BIF017	BIF, SZ	Prospect	-9999		4.92
3	BIF018	BIF, SZ	Prospect	-9999		3.30
3	BIF019	BIF, Fold nose, SZ	Prospect	0.005		0.03
3	BIF020	BIF, SZ	Prospect	-9999		1.51
3	Big Sandy	BIF, SZ at gwycke / volc contact	Prospect	0.9		5.95



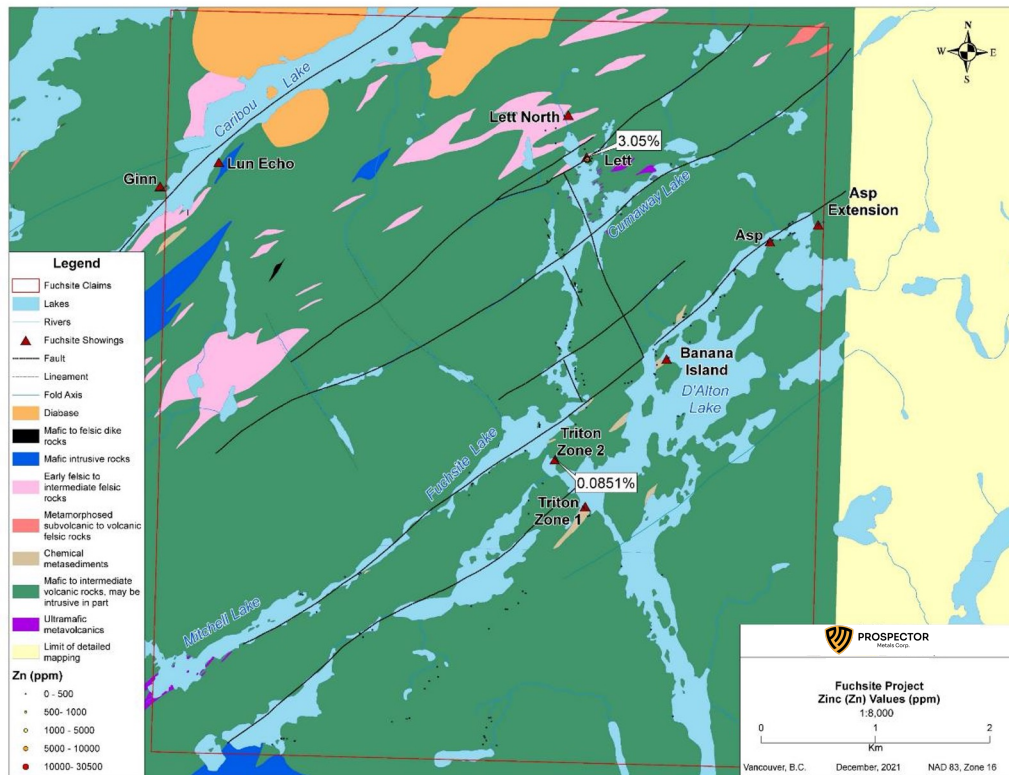
# SAVANT LAKE

## Exploration 2022

- Prospecting, Mapping to confirm and define shear and alteration zones
- Detailed sampling of Priority 1 targets at Wiggle and One Pine, together with ground magnetic surveys,
- Follow up additional targets with prospecting and Mapping
- Conduct property -wide LiDar survey
- Diamond Drilling of select targets H2.
- Fully Permitted.







## FUCHSITE LAKE

### Shear Zone Hosted High-grade Gold, Ontario

- An additional 123 cells were registered on the west side of the Property in 2021 to cover the ASP showing. Total Property size is now 6265 ha.
- Archean shear zone hosted gold targets, 5km strike.
- Historical sampling returned 1.7 g/t Au and 1.4 g/t Au.
- No follow up work has been recorded in nearly 50 years except for small scale prospecting and drilling at Lett in 1981.
- Cross River Ventures are earning into 60% of the Fuchsite Property.

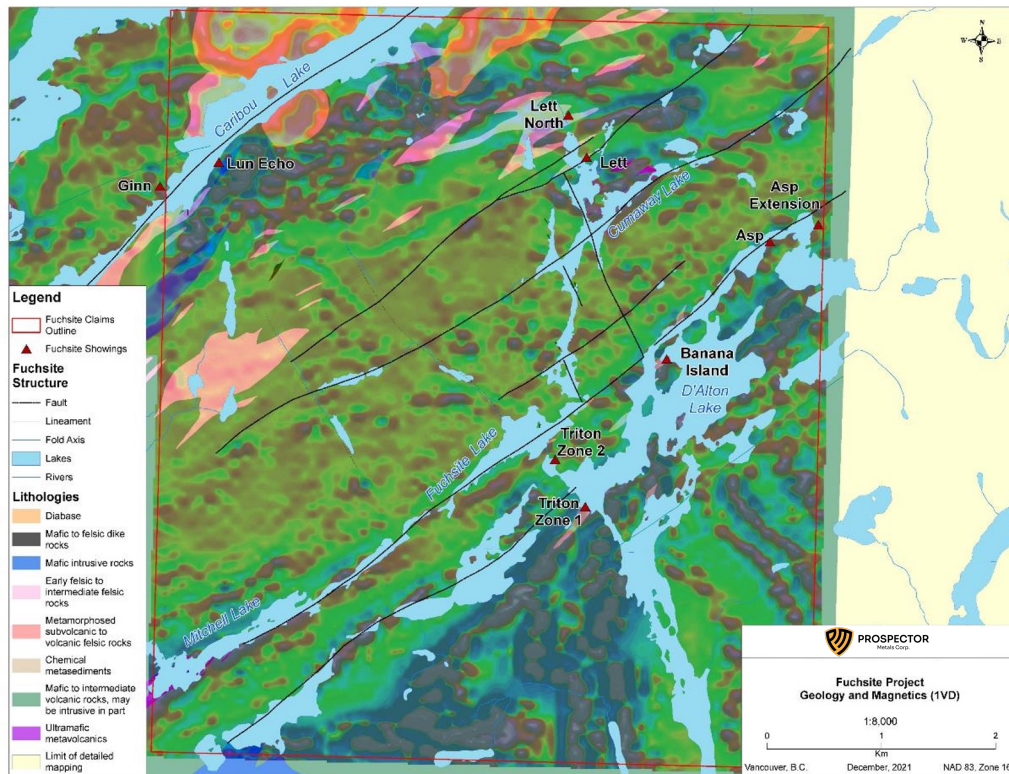
Showing/Location	Assay Results	Notes
Lett Showing	2.97 g/t Au; 25.1 g/t Ag; 3.05% Zn; 0.679% Cu	Vein breccias with massive sphalerite lenses.
Lett North Showing	0.816 g/t Au; 1.21% Cu	Malachite stained calcite-K altered sulphidized volcanics (?) proximal to intrusive.
Asp Showing	1.76 g/t Au	Quartz-carbonate vein in shear zone. Coarse asp-po.
Asp Showing - Extension	0.526 g/t Au; 29.8 g/t Ag; 1.37% Cu	10cm quartz-chalcopyrite vein.
Triton Zone 1 Showing	0.089 g/t Au; 0.181% Cu	Chert-hosted (semi) massive py-po-mg breccias.
West of Lett	0.255 g/t Au	Low-sulphide intrusion-hosted quartz veins.
Cumaway Peninsula	0.204% Cu	Silica-calcite-Fe amphibole altered volcanic (?) with disseminated py-po-cpy.



## FUCHSITE LAKE

### 2021 Exploration

- 7 showings were confirmed during regional prospecting and mapping in 2021. 5 new zones were discovered/rediscovered in 2021.
- Archean shear zones are characterized by silicification and carbonization, with local coarse arsenopyrite and pyrite mineralization, traced for ~500m along strike.
- Breccia zones proximal to an intrusive body were identified at the Lett showing with Au, Ag and percent scale Cu-Pb-Zn in grab samples
- Airborne magnetic and LiDar surveys were completed



# FUCHSITE LAKE

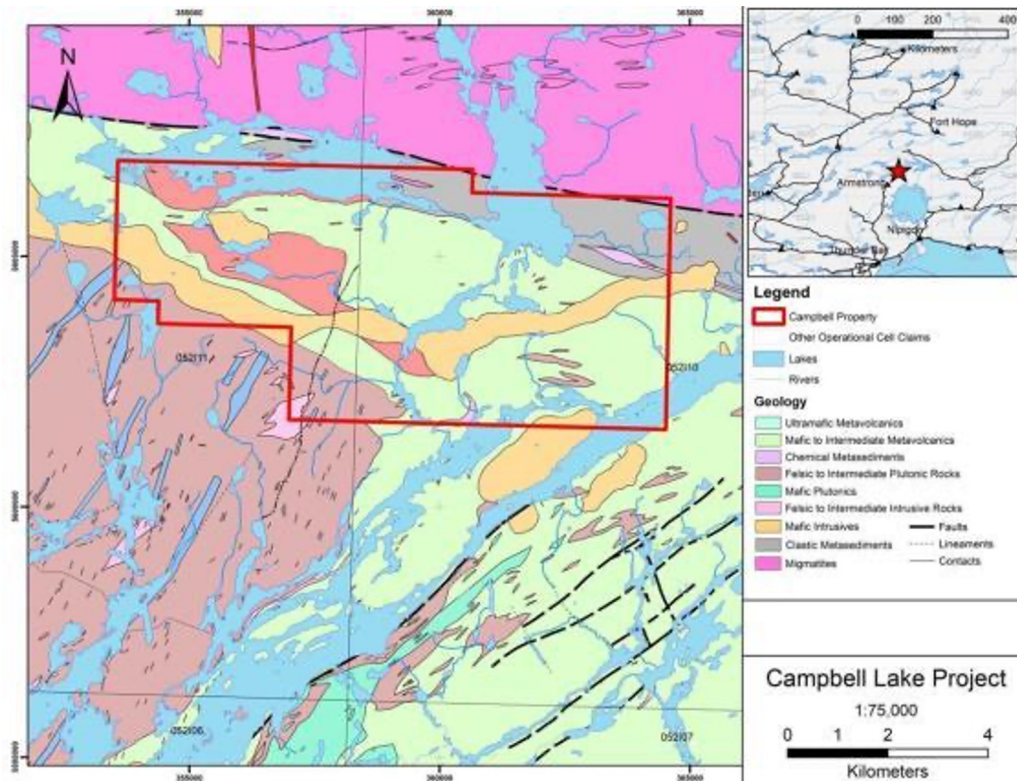
## 2022 Exploration

### Phase 1 - 4-6 weeklong field program:

- Detailed prospecting - Asp, Lett, Triton
- Soil & bio pilot survey - Asp, Lett, Triton
- Hand trenching/pitting - Asp
- Historical trenches clean up, mapping, sampling - Lett
- Prospecting, mapping and soil sampling sample west of Lett North
- Follow-up prospecting - South Boundary IF, Mitchell Lake and any anomalies discovered earlier during 2021
- Follow-up drilling program and ground geophysics 2023

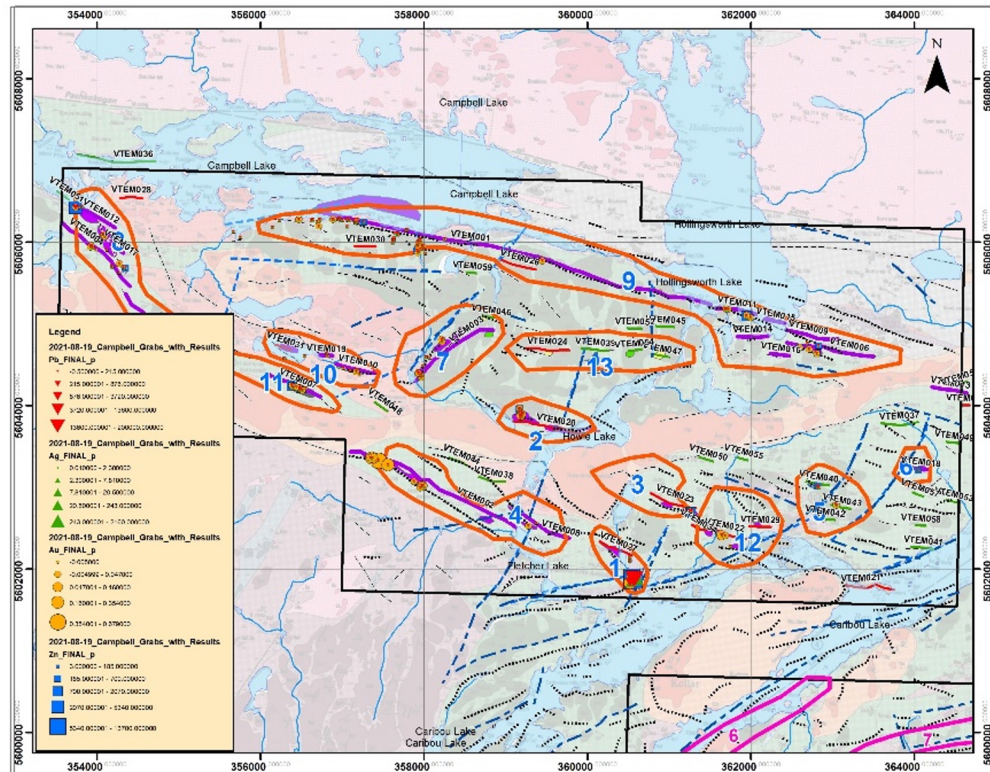






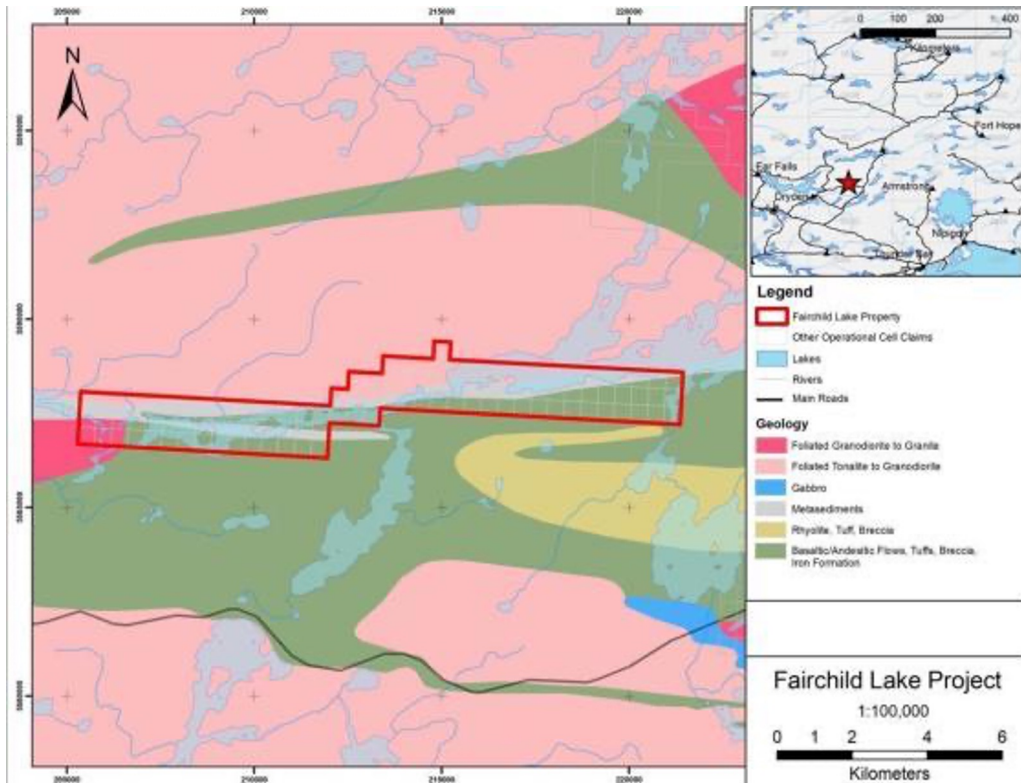
## CAMPBELL LAKE, Ontario

- 4500 Ha project 40 km north of Armstrong, Ontario.
- ~10km long prospective alteration corridor.
- Gold mineralization including 8.57 g/t Au over 25.4 cm in chip samples.
- No modern exploration fieldwork has been reported in over 60 years.



## CAMPBELL LAKE, 2021 Exploration and Plans for 2022

- Property-wide Airborne Magnetics, VTEM, and LiDar complete
- Regional prospecting of historical showings complete and confirm multiple targets types: Fletcher Au trend, Bovin-Gilbert Pb-Zn-Au Target.
- Targeted prospecting, sampling and mapping along Zn dominated Massive Sulphide trends identified on the VTEM, with the goal to define drill targets for 2023



## FAIRCHILD LAKE, Ontario

- Structural setting for orogenic (vein hosted) gold deposits that occur in the Superior Province of Ontario and elsewhere.
- 15 km prospective strike



[prospectormetalscorp.com](http://prospectormetalscorp.com)

---

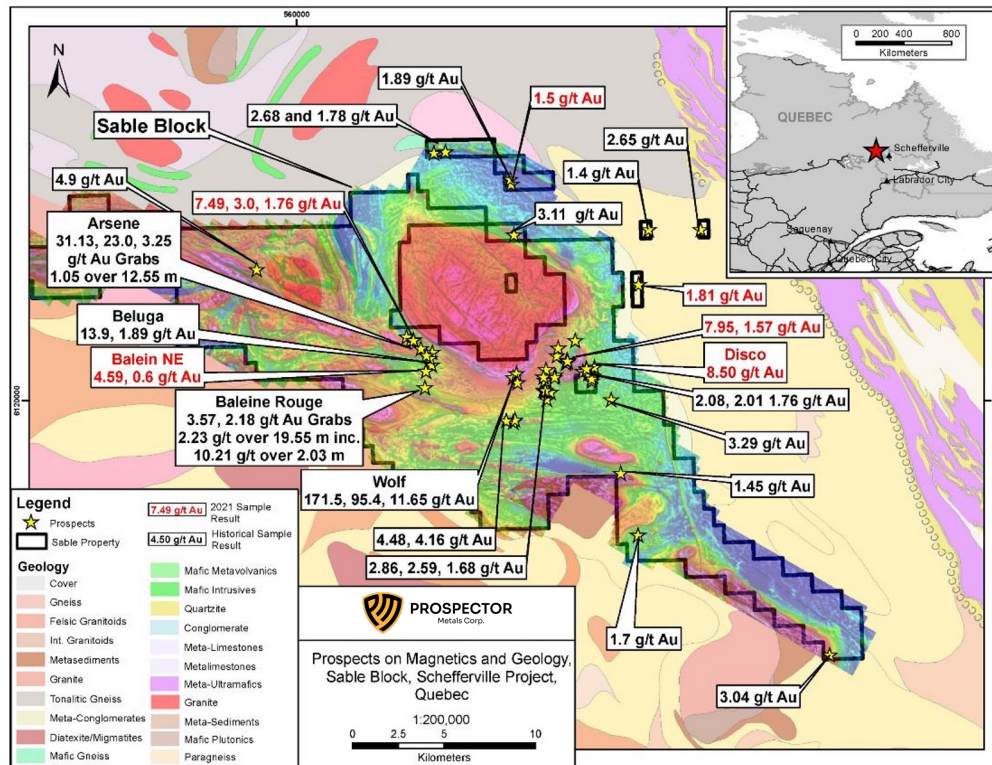


# QUEBEC

## Schefferville Project

Iron formation hosted gold





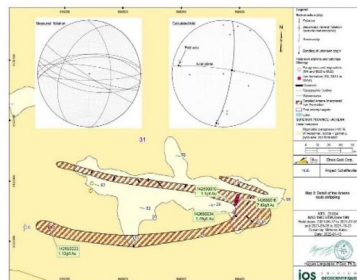
## SCHEFFERVILLE, Quebec

- 398km-sq claim area 35km west of the mining town of Schefferville, Quebec.
- +53 gold occurrences returned from 1 g/t Au up to 171.5 g/t Au documented, the vast majority of these are untested by drilling.
- Results from 35 short historic drill holes on six targets include 2.23 g/t Au over 19.55m, 10.21 g/t over 2.03m.
- High-resolution Airborne Magnetic and LiDar surveys completed.



Name	Ethos block	Grade (length)	Target
Arsene	Sable	31.1 g/t Au	31
Beluga	Sable	2.0 g/t Au	30
Baleine Rouge	Sable	12.0 g/t Au	29
Baleine Rouge Pb-Zn	Sable	6.5% Pb (4.1m)	29
Wolf	Sable	171 g/t Au	1
South Hills	Sable	4.4 g/t Au (0.3m)	2
Rover Valley - South	Sable	15.9 g/t Au	3
Rover Valley	Sable	3.7 g/t Au	4
Rusty Acres	Sable	6.7 g/t Au	5
Rusty Acres NW	Sable	1.7 g/t Au	10
Disco	Sable	4.1 g/t Au	6
Disco - NE	Sable	1.7 g/t Au	7
Goodwood - 4207	Sable	1.0 g/t Au	11
Goodwood - 1199	Sable	6.5 g/t Au	8
Sample 1254	Sable	3.3 g/t Au	9
Sample 1155	Sable	1.5 g/t Au	15
Sample 999	Sable	1.7 g/t Au	26
Anomaly 691	Sable	3.0 g/t Au	28
Goodwood River	Sable	3.1 g/t Au	22
Scheffor - East	Sable - North	2.7 g/t Au	12
Scheffor (area 18)	Sable - North	1.7 g/t Au	12
Area 10	Sable - East	2.5 g/t Ag (1m)	16
Sample 1112	Sable - East	2.7 g/t Au	17
Sample 1186	Sable - East	1.8 g/t Au	13
Goodwood River - North	Sable - North	1.8 g/t Au	14
Hamard Lake - North - 2	Hamard	1.4 g/t Au (4.5m)	33
Hamard Lake - North - 1	Hamard	7 g/t Ag	33
La Borde Lake - 1	Hamard	10.3 g/t Ag	32
La Borde Lake - 2	Hamard	9.9 g/t Ag	32

**Table 2:** Occurrences located on the current Ethos Gold Schefferville properties. The target number refers to the area targeted for the reconnaissance work presented here. The grade is the best historical value either from grab sample or channel sample, in which case the length of the sample is mentioned.



## SCHEFFERVILLE, 2021 Exploration and Plans for 2022

- Prospecting, Mapping and stripping was conducted in 2021 to evaluate and confirm historical work.
- Significant Au concentrations are overwhelmingly hosted in iron formation. Iron Formations multiple metres thick have been traced over distances greater than 1 km. Thickened fold structures have been mapped and correlate well with comparable structures in the geophysics.
- Detailed analysis for the regional geophysics and Lidar will be followed by detailed ground magnetics, stripping and sampling to define numerous targets for ~5000m DDH program



[prospectormetalscorp.com](http://prospectormetalscorp.com)

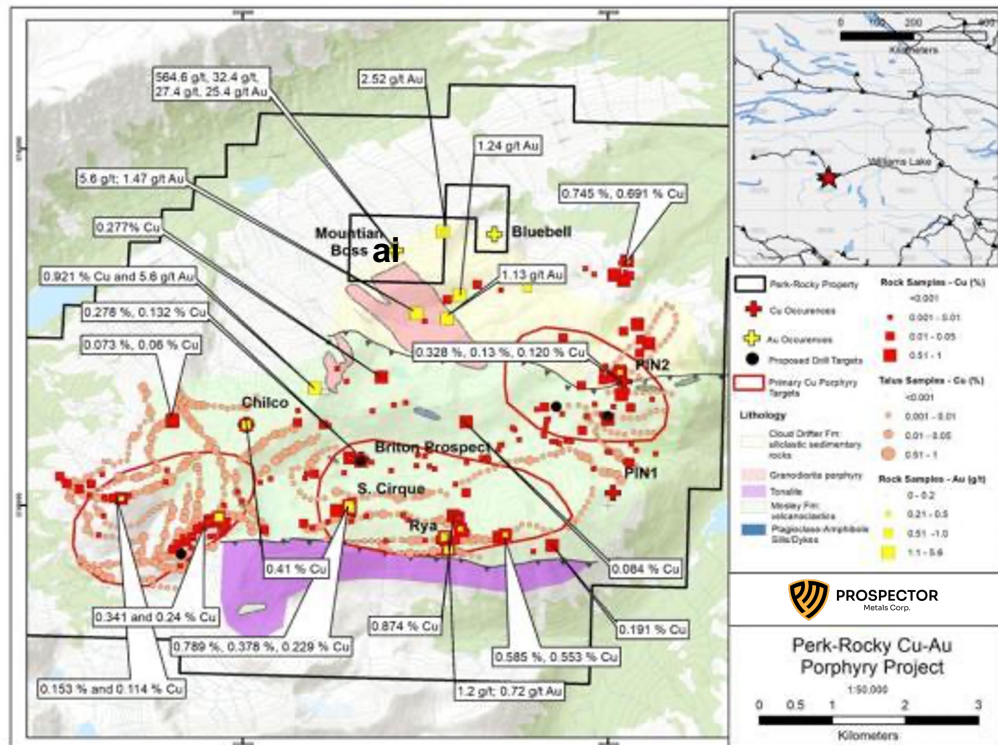


# BRITISH COLUMBIA

**Perk Rocky Project:**  
Cu Au Porphyry

**Gaffney Project:**  
Orogenic Gold





**Note:** The Mountain Boss and Bluebell prospects are outside of the boundary of the Perk-Rocky property

## PERK-ROCKY COPPER

### Gold Porphyry Target, British Columbia

- Large bulk tonnage porphyry target, numerous Cu-Au showings over 8 km x 5 km area
- Road accessible and fully permitted for drilling
- Ethos completed a 6-hole (2050m) drill program in 2021 with Five of the six holes contain intense alteration and intervals of anomalous Cu (above 100 ppm) with PK21-01 returning 113.87 ppm Cu over 27.83m, PK21-02 returning 121.34 ppm Cu over 33.60m, PK21-04 returning 134.54 ppm Cu over 25.60m, PK21-05 returning 113.23 ppm Cu over 137.25 m and 119.82 ppm Cu over 26.26m, and PK21-06 returning 120.36 ppm Cu over 36.67 and 126.94 ppm Cu over 9.63m.
- Shortwave Infrared (SWIR) analysis identified alteration minerals including abundant pyrophyllite and topaz, consistent with an advanced argillic (AA) assemblage.
- Follow-up work to focus on re-interpretation of geophysical datasets incorporating the new drill hole information.



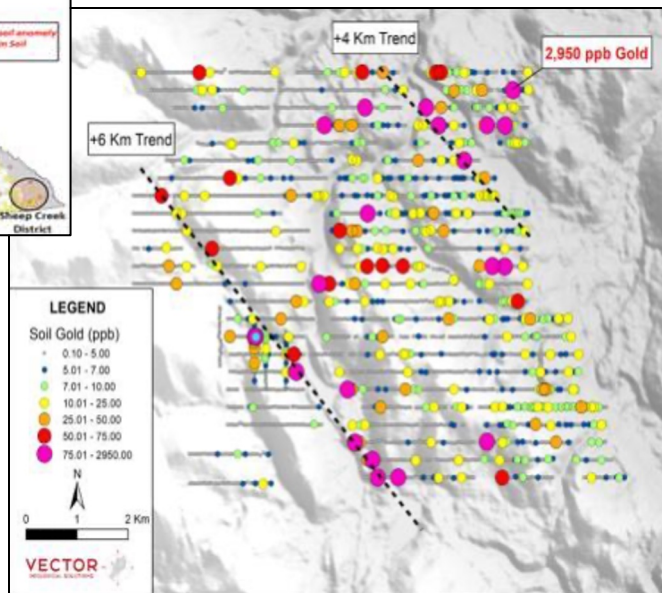
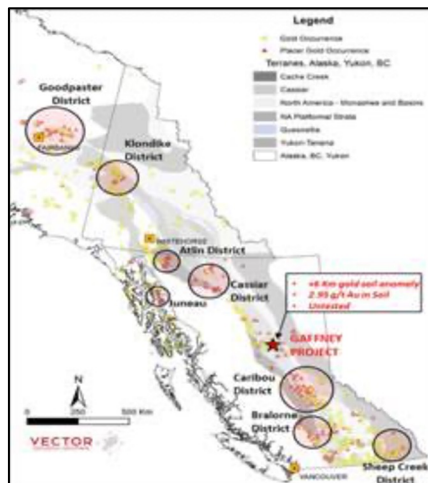
# PERK-ROCKY COPPER

## Gold Porphyry Target, British Columbia

	PERK ROCKY
<b>Telescoping; juxtaposition of multiple systems</b> → increases likelihood that drill target is <1000m deep; potential for high grade	✓
<b>Mafic to intermediate composition (reactive) host rocks</b> → increases likelihood that drill target is <1000m deep; potential for high grade	✓
<b>Porphyry dikes</b> → present in most deposits globally	✓
<b>Extensive copper mineralization</b> → implies significant metal endowment	✓
Large, multi-km alteration footprint	✓
Intense alteration with C mineralization present in distal facies	✓
Top of system preserved; includes advanced argillic facies	✓
Development of stockwork-style veins (e.g. A-veins, D-veins etc.)	✓







# GAFFNEY

## Orogenic Gold Project, British Columbia

- Large road accessible orogenic gold target
- +40,000 oz placer gold mined from Manson Creek immediately north of the project
- Multi-km gold soil anomaly, comparable to Coffee and Golden Saddle projects
- Untested 4km+ x 6km+ gold structures
- Up to 2.95 g/t Au in soils

# INVESTOR INFO

**EXCHANGE**.....TSX-V ▪ OTCQX ▪ FRANKFURT

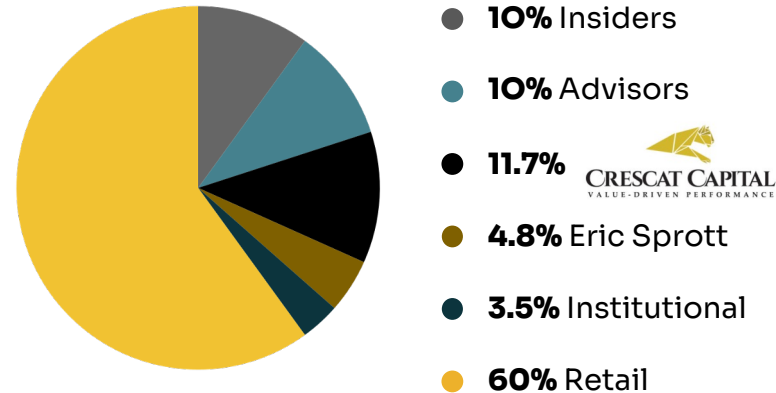
**SYMBOLS**..... PPP ▪ ETHOF ▪ 1ET

**SHARE PRICE** .....0.55 ▪ US 0.45 ▪ € 0.40

**SHARES OUTSTANDING** .....54.5M

**OPTIONS** .....4.3M ▪ Avg. Ex. Price: 0.63

**WARRANTS** .....10.6M ▪ Avg. Ex. Price: 0.93





**PROSPECTOR**

Metals Corp.

**ALEX HEATH, CFA**

President & CEO

Email **[alexh@prospectormetalscorp.com](mailto:alexh@prospectormetalscorp.com)**

Phone **+1 (604) 354-2491**

Address **1430 – 800 West Pender Street,  
Vancouver B.C. V6C 2V6**

Website **[prospectormetalscorp.com](http://prospectormetalscorp.com)**

